

# CABOPINO

*Apartment #33*



A RELAXING ESCAPE IN MARBELLA, SPAIN



# About

Welcome to our home. Enjoy your holiday in a two-bedroom, two-bathroom apartment with a modern kitchen with Bosch appliances and an American-style refrigerator that always has plenty of ice for your drinks.

You are currently located in the small port village of Cabopino, which is only 12 km from the centre of Marbella. The name Cabopino means pine cape and that's exactly what you can expect. The pine forests can already be seen from the main coastal road and stretch all the way to the fantastic sandy beaches. These can be found on both sides of the harbour. They are surrounded by a natural park with sand dunes and pine trees.

The port of Cabopino is small and intimate compared to Puerto Banús. There are some very good bars and restaurants. Five minutes away by car, in the adjacent urban areas Elviria and Calahonda, you'll find shops with everything you can think of. Cabopino also has its own 18 hole golf course. It is considered by many to be one of the best-guarded secrets of the Costa del Sol. If you've been looking for a traditional town right by the sea, you've arrived at your destination.

# CHECK-IN



## CHECK-IN TIME IS 4 PM

WE HOPE THE CHEK-IN PROCESS WENT SMOOTHLY. IN YOUR HANDS YOU SHOULD HAVE A KEY FOR THE GATE AT THE MAIN STREET, THE KEY TO THE HOUSE, THE KEY TO YOUR APARTMENT AND THE REMOTE CONTROL FOR THE GARAGE.

---



## THE GARDEN GATE KEYPAD CODE IS 3099

YOUR APARTMENT IS CONNECTED TO A GARDEN WITH A POOL AND SUNBEDS. THE ENTRANCE IS SECURED BY A KEYPAD THAT YOU WILL HAVE TO UNLOCK.

---



## OTHER CHECK-IN INFORMATION

AFTER ENTERING YOU WILL FIND A UNIVERSAL SWITCH ON YOUR LEFT TO TURN ON THE LIGHTS. ON THE RIGHT HAND SIDE YOU WILL FIND THE FUSEBOX, WHERE YOU WILL NEED TO TURN ON THE SWITCH FOR THE BOILER.



# HOUSE

# Rules

1 NO SMOKING INSIDE

2 NO PETS ALLOWED

3 NO PARTIES PLEASE

4 DON'T LEAVE WATER ON THE  
FLOOR IN THE KITCHEN

5 QUIET HOUR STARTS AT 10 PM

6 DON'T FLUSH ANYTHING OTHER  
THAN TOILET PAPER

THE *WiFi*

NETWORK: WIFI\_OLIVENET-1129AA

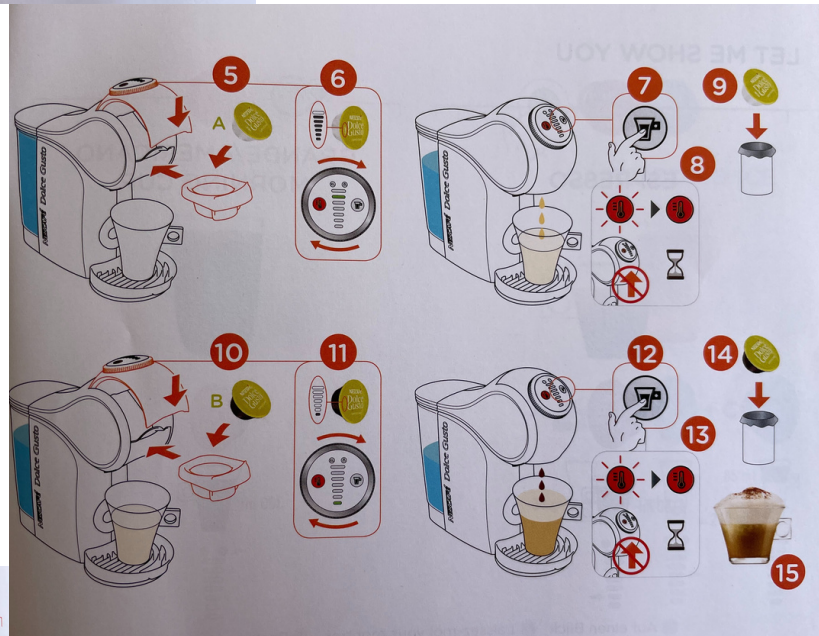
PASSWORD: XCgUBc3A



# INSTRUCTION

## MANUAL *Coffee machine*

LET ME SERVE YOU



LET ME SHOW YOU



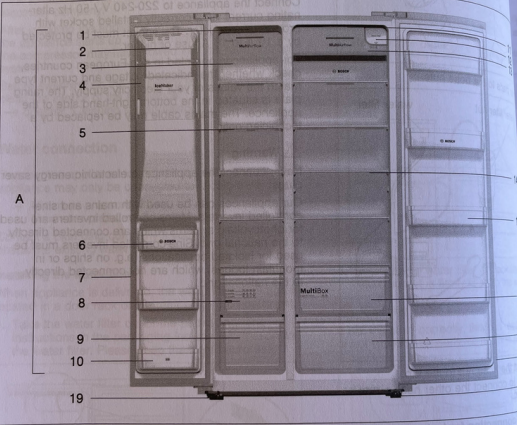
# INSTRUCTION

# MANUAL

*Fridge*

## Getting to know your appliance

**Note:**  
Due to unceasing modification of our products your appliance may be slightly different from this instruction manual but its functions and using methods remain the same.

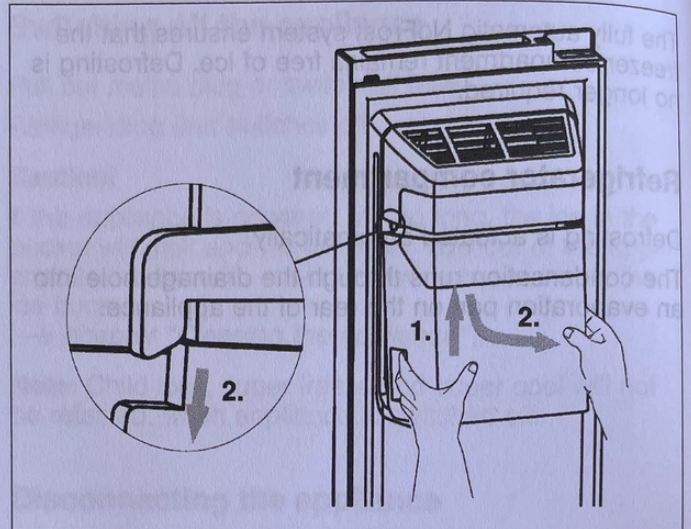


- |  |   |
|--|---|
| <p><b>A Freezer compartment</b></p> <ul style="list-style-type: none"> <li>1 Freezer LED Light</li> <li>2 Ice-maker front cover assembly</li> <li>3 Wind channel cover in freezer</li> <li>4 Ice bucket assembly</li> <li>5 Freezer shelf</li> <li>6 Freezer door rack</li> <li>7 Freezer door gasket</li> <li>8 Freezer upper drawer</li> <li>9 Freezer lower drawer</li> <li>10 Freezer door rack (two-star zone)</li> </ul> | <p><b>B Refrigerator compartment</b></p> <ul style="list-style-type: none"> <li>11 Fridge LED light</li> <li>12 Water filter (behind cap)</li> <li>13 Wind channel cover in fridge</li> <li>14 Fridge shelf</li> <li>15 Fridge door rack</li> <li>16 Fruit and vegetables crisper</li> <li>17 Fridge lower drawer</li> <li>18 Fridge door gasket</li> <li>19 Adjustable feet</li> </ul> |
|--|---|

## Handling the ice bucket

### Removing the ice bucket

For cleaning purposes or if you don't need ice, the ice bucket can be removed.



1. Hold at the handle and lift up the ice bucket.
2. Pull out the ice bucket slowly to prevent damage.

## Ice and water dispenser

The following can be dispensed as required:

- cooled water
- cubed ice
- crushed ice

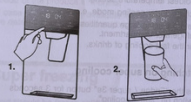
You can choose the type of ice or water by touching the **W** (cubed ice), **I** (crushed ice) or **O** (water) button.

- Warning**
- Do not use fragile receptacles for dispensing water or ice – risk of injury from broken glass!
  - Keep fingers clear of the discharge opening. Risk of injury from crusher blades!

**Note:**  
The ice and water dispenser will not function when the freezer door is open or child lock is active.

### Dispensing water

The water from the dispenser is cooled to a palatable temperature. If you would like the water colder, place ice cubes in the glass before dispensing the water.



1. Press button **O** to activate dispenser mode "water". Display **O** will illuminate, when "water" mode is active.
2. Press the glass against the dispenser lever. The water stops running when the glass is removed from the lever. Do not immediately remove your glass from under the dispenser after dispensing water. Wait for 2 or 3 seconds to prevent spills.

**Note:**  
If no water is dispensed or it is dispensed slowly, the water filter may be clogged and may need to be replaced (→ chapter "Replacing the water filter").

## Ice maker

When the freezer compartment has reached its freezing temperature, water flows into the ice maker and freezes into ice cubes. When the ice cubes are ready, they are automatically discharged into the ice bucket.

### Turning off the ice maker

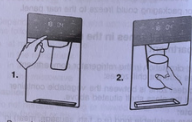
The ice maker can be turned off to save water and energy, if no ice is needed. Press the "ice on/off" button to turn on or off the ice maker. Display **W** (ice off) is illuminated, when the ice maker is turned off.

**Note:**  
"ice on/off" only concerns the ice maker, not the dispenser.

### Emptying the ice bucket

If you do not dispense ice for a long period, ice may clump in the ice bucket. If this occurs, please remove and empty the bucket (→ chapter "Cleaning the appliance").

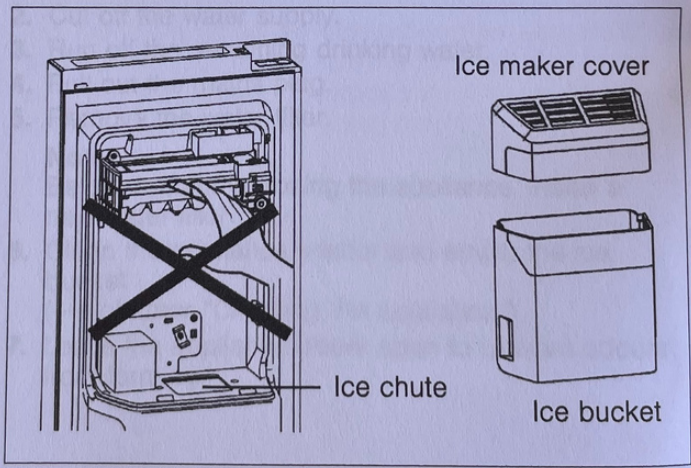
### Dispensing ice



1. Press button **I** or **W** to activate dispenser mode "cubed ice" or "crushed ice". Corresponding display **I** or **W** will illuminate, when selected mode is active.
2. Press a suitable receptacle against the dispenser lever. Remove the receptacle from the dispenser lever when it is approx. half full. Ice in the discharge may cause the receptacle to overflow or block the discharge. Do not immediately remove your glass from under the dispenser after dispensing ice. Wait for 2 or 3 seconds to prevent spills.

**Notes**

- After switching over from dispensing cubed ice to crushed ice, the dispenser may still contain whole ice cubes or pieces of ice cube. These will be dispensed with the first portions of crushed ice.
- After switching over from dispensing crushed ice to cubed ice, a small amount of crushed ice may be dispensed with the first portions of cubed ice.
- Do not dispense ice continually more than one minute during normal use to avoid excessive temperature on the ice crusher motor.



# Places to eat

## Restaurants:

Cabo Pizza - restaurant right below your window (everything from breakfast to dinner or just a snack)  
<https://www.facebook.com/cabopizzacabopino>

Da Bruno - traditional Mediterranean cuisine (a popular restaurant 5 min. walk away that also runs a small shop with cheese, ham and wine)  
<https://www.dabruno.com/es-cabopino#SEC-CARTAS>

## Beach restaurants:

Andy's Beach Restaurant & Bar - drinking sangria while watching the sunset over the sea is a sight to behold.

<https://andysbeach.com/>



# BEFORE

# YOU GO



PUT ALL THE DIRTY DISHES IN  
THE DISHWASHER



EMPTY AND DISPOSE OF FOOD IN  
THE FRIDGE OR FREEZER



TURN OFF THE AIRCONDITIONING/  
HEATING



THROW OUT THE TRASH



DOUBLE CHECK YOU HAVE ALL  
YOUR BELONGINGS



TURN OFF THE UNIVERSAL SWITCH  
FOR THE LIGHTS AND TURN OFF  
THE FUSE FOR THE BOILER